

It Takes a Valley: Mapping Crisis Response and Recovery in Eagle County

Vail Health Behavioral Health



A story of community need, coordinated
crisis response, and recovery close to home.

Presenters



Dr. Paige Baker-Braxton



Clinical Psychologist



Senior Director of Behavioral Health



Matt Laycock



Licensed Clinical Social Worker



Manager of High Acuity
Services Program

Extraordinary Beauty. Extraordinary Pressure.

A Community of Opportunity and Challenge

 **THE VAIL VALLEY WE LOVE**
Natural beauty. Recreation. Connection.



VS.


 World-class recreation


 Four seasons of adventure

 A vibrant, tight-knit mountain community


 A destination that inspires


 A way of life that nourishes well-being


 **THE REALITY BEHIND THE SCENERY**
Extraordinary economic pressure for working families.

 **\$1.2M+**
Average Home Price

209%
Increase since 2012

 **1 in 5**
rural residents report skipping care due to cost

 **Nearly 4 in 10**
Students qualify for free or reduced lunch

 **Nearly 1 in 3**
Are English Learners

 These data show a community where many working families—especially bilingual and immigrant families—are essential to the valley’s functioning but increasingly unable to live securely within it.

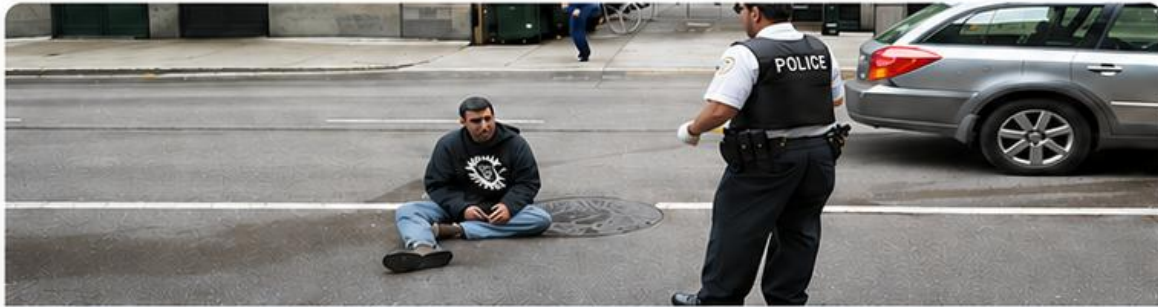
Growing Mental Health Needs. Limited Resources.



1 Psychiatrist for Eagle & Summit County



Less Than a Dozen Therapists



No Coordinated Crisis Response;
Incarceration of BH



Lack of Inpatient Psychiatric Beds



These gaps created an urgent and immediate crisis.

The Need in Eagle County



**The Community
was in crisis.**



2015 – 2017 Vail Health ED visits for drugs and alcohol increased 332%.



2015 – 2019 Vail Health ED visits for depression and anxiety increased 465%.



2017 1 in 4 seventh graders had seriously considered suicide.



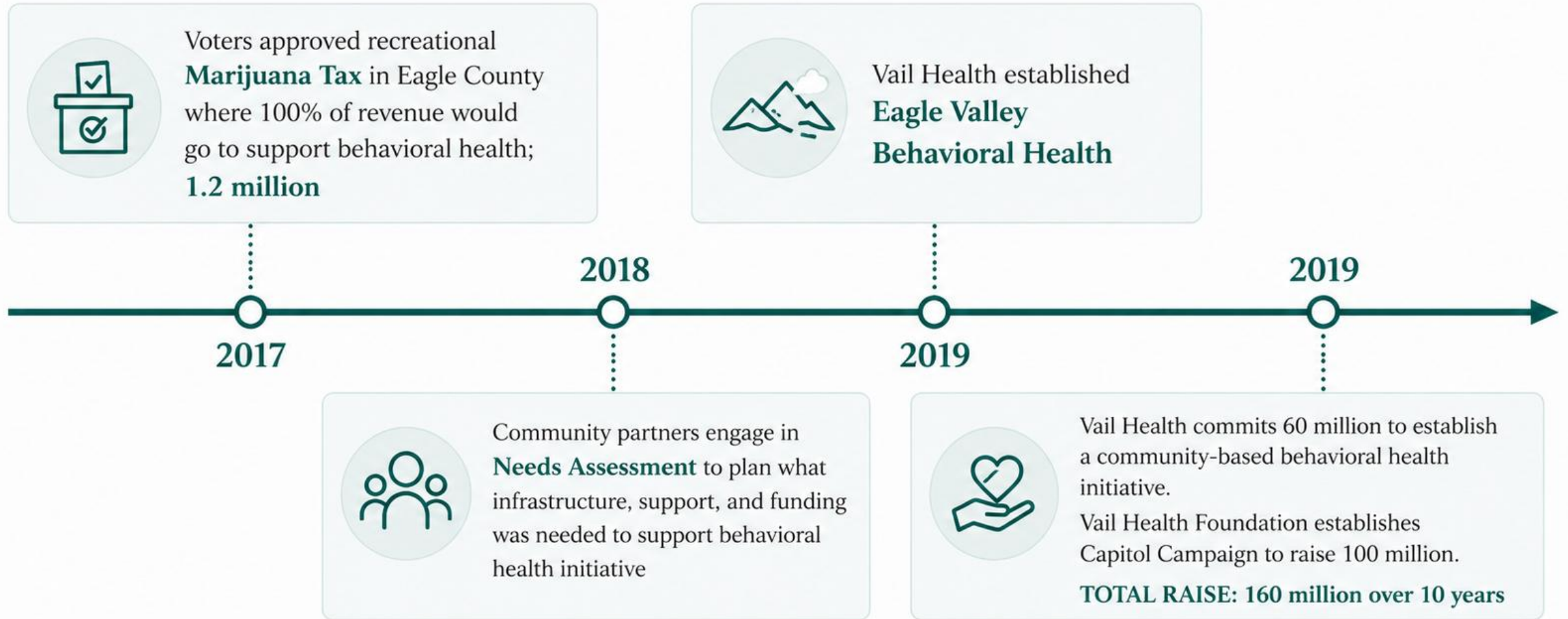
2018 Eagle County averaged 1 suicide attempt per day.



2016 – 2018 Eagle County experienced a 183% increase in suicide.

Eagle County's Response

A community-driven commitment to behavioral health.



Goals Over the Next 10 Years

Address the growing behavioral health crisis in community and schools:

1

Increase Prevention Services

2

Enhance Access to Behavioral Health & Crisis Services

3

Build an In-Patient Psychiatric Facility in Eagle County

4

Measure and Evaluate Programming and Progress

Enhance Access to Behavioral Health Services



1. Collective Impact Model

- Reduce competition; leverage specialization
- Develop board and advisory council for Eagle Valley Behavioral Health
- Allocate \$3 million to local non-profits with peer support
- Fully fund Crisis services



2. Development of Scholarship Program for Services

- Olivia's Fund
- Vail Health Financial Aid



3. Mountain Strong Employee Assistance Program

- Contracting with 200 private practice providers
- Providing free services for many employees of Eagle County



 Stronger together. Better outcomes for our community.



By investing in partnerships, scholarships, and support, we are building a **healthier** Eagle County.

Outpatient Behavioral Health



Community Mental Health Designation / Comprehensive Safety Net Provider

- ✓ State designated comprehensive service provider
- ✓ Enhanced state funding
- ✓ Increased Medicaid rates
- ✓ Access to federal grants



First in 40 years to apply and receive designation.



Outpatient Services

- Person icon: Case Management
- Speech bubble icon: Therapy
- Group of people icon: Intensive Outpatient / Assertive Community Treatment
- Brain icon: Psychiatry
- Pill icon: Medication Assisted Treatment
- Head with brain icon: Transcranial Magnetic Stimulation
- Leaf icon: Naturopathic Medicine
- Lightbulb icon: Innovation & Healing Centers



BEHAVIORAL HEALTH
VAIL HEALTH

Crisis Response



Who We Serve:

- Individuals and families experiencing behavioral health crisis
- Available: 24/7, 365
- Free and Confidential



How Crisis Response Works:

- Crisis Mental Health Evaluation or Integrated Behavioral Health Support
- Safety Planning
- Involuntary Hold
- Follow-Up
- Critical Incident/Fatality Response



How Teams are Dispatched:

- Family/Friends or Individual in crisis
- Statewide Crisis Line
- Community paramedics or Law enforcement
- Medical clinics, schools, BH providers



Key Partners:

- Vail Health Crisis and Community Response Team
- Law Enforcement (Vail PD, Avon PD, Eagle County Sheriff)
- Community Paramedics/EMS
- VH Emergency Department
- SpeakUp Reach Out



VAIL HEALTH Crisis Line

24/7 free and confidential
support for those in crisis



Precourt Healing Center

A 28-bed inpatient acute psychiatric facility designed to meet a critical need through integrated whole-body care.



Individual therapy



Psychiatric care



Case management



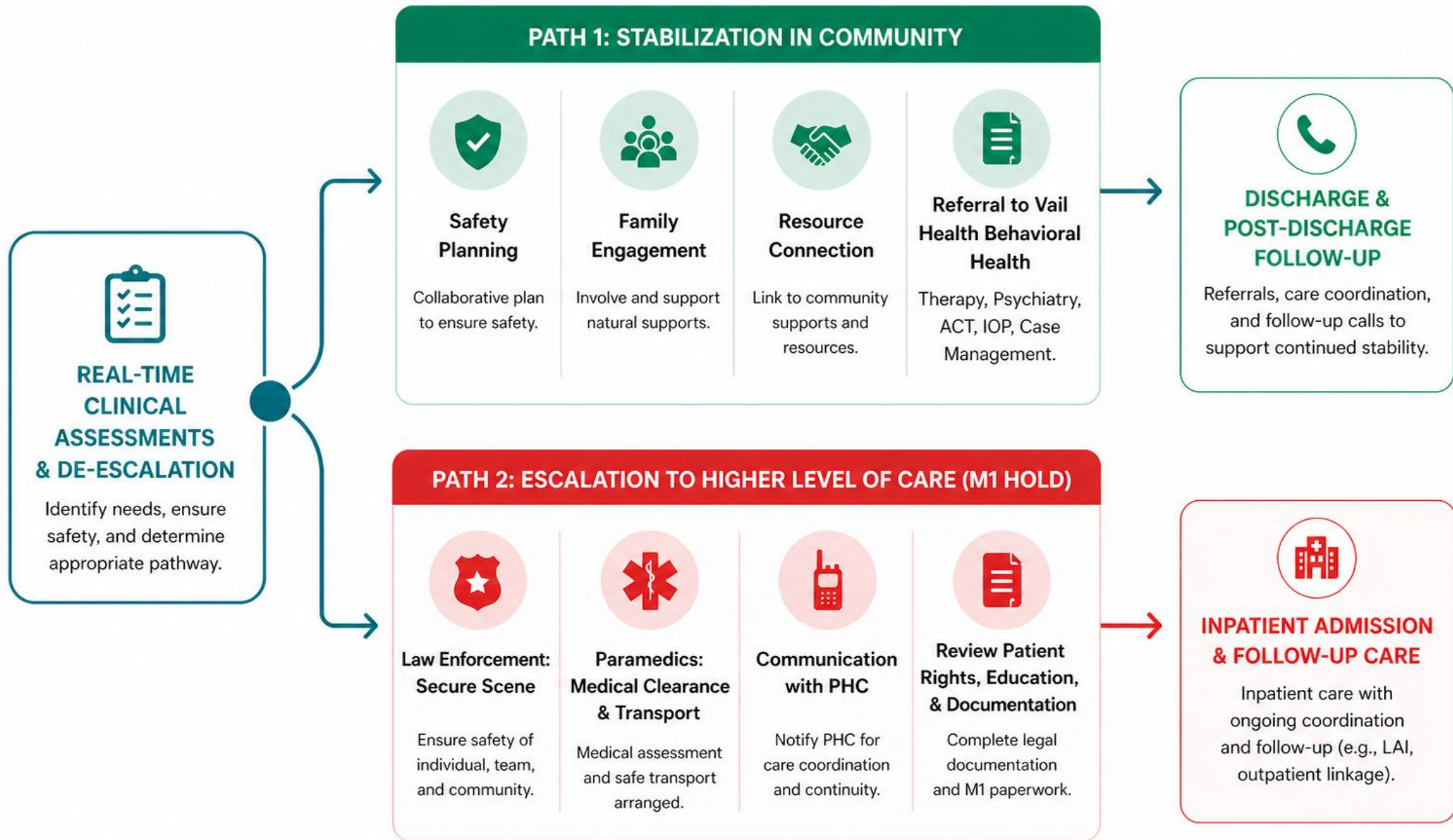
Yoga, art, and movement groups



Healthy food and nourishing spaces



Whole-body care for lasting healing



COORDINATED. COMPASSIONATE. CONTINUOUS. | Our goal is safe resolution, reduced ED utilization, and seamless continuity of care—supporting individuals and strengthening our community.



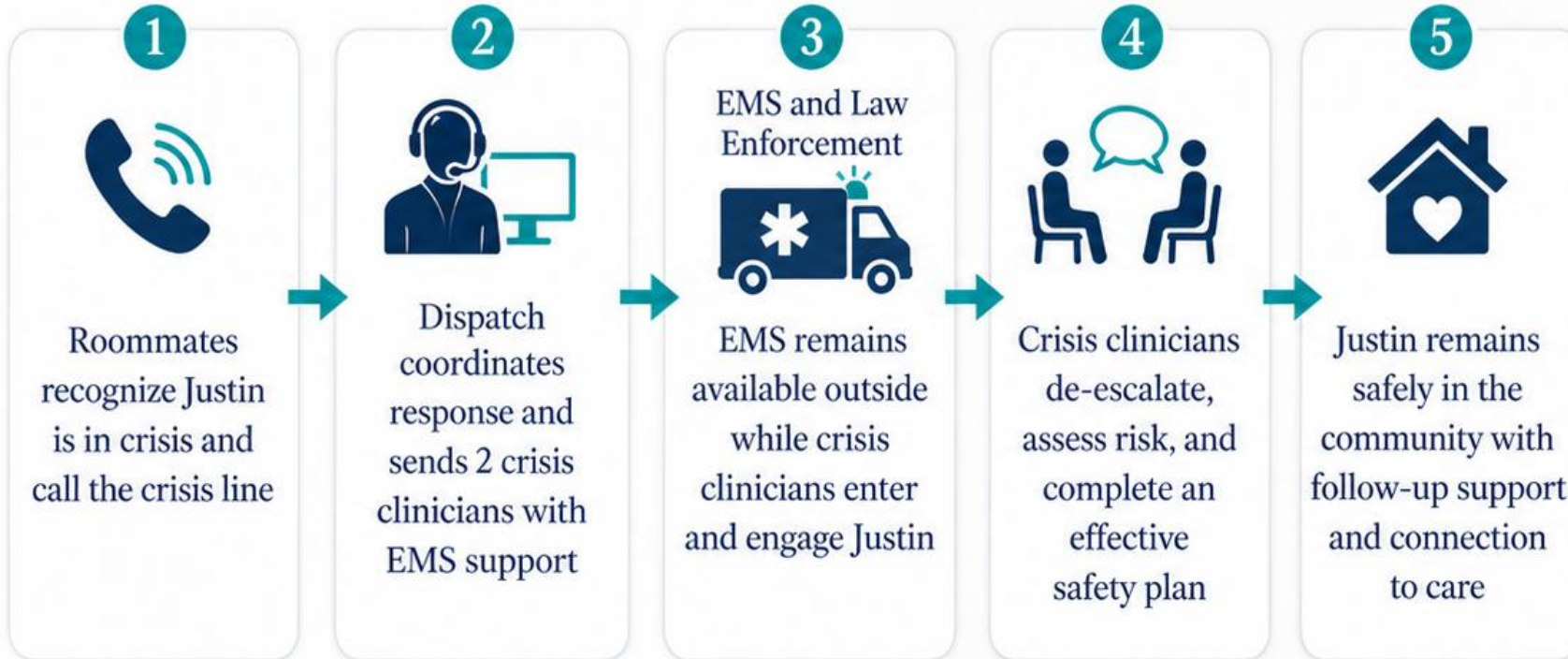
Justin's Story

MAPPING A CRISIS



Justin's Journey: Best-Case Scenario

A coordinated response that keeps crisis care in the community



Best-case outcome: the crisis is stabilized at home, avoiding ED utilization, law enforcement involvement, and hospitalization.

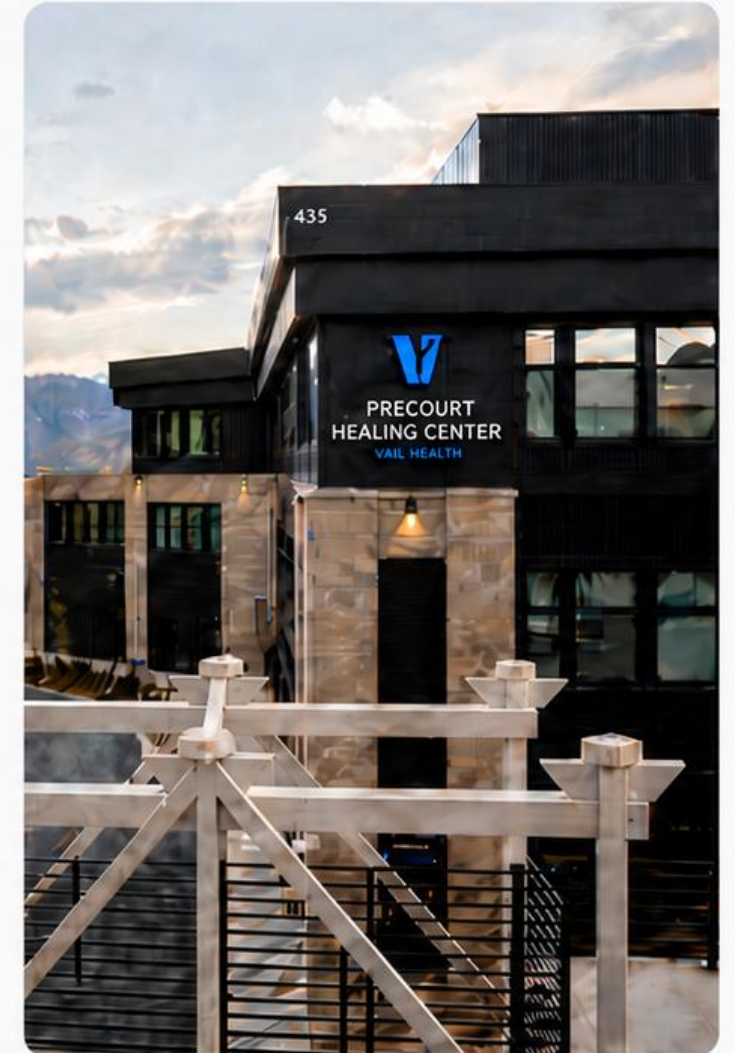


Justin's Journey: Care in His Community

A coordinated response that brings the highest level of care close to home



Highest level of care provided in community



Recovery Happens in Community

Stabilization is only the beginning.

1



Collaborative Discharge

A plan for what comes next



2



Outpatient Treatment

Psychiatry, therapy, case management, ACT, IOP



3



Community Connection

Support, belonging, identity-affirming resources



4



Return to Mountain Life

Recovery, resilience, and reconnection



Justin's story becomes one of recovery — not despair.

2025: A Year in Review

A continuum of care reaching patients across outpatient, crisis, and community supports



System impact: coordinated behavioral health services create access before, during, and after crisis.

“

Hope is being able to see that there is light despite all of the darkness.

— Desmond Tutu

In Eagle County, hope is built through connection, coordinated response, and care that continues after the crisis.
